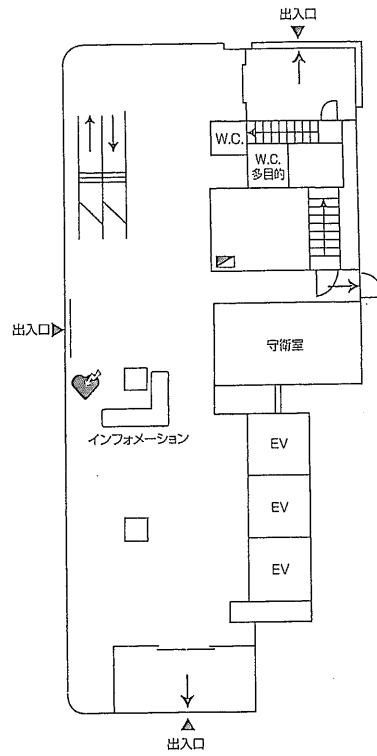
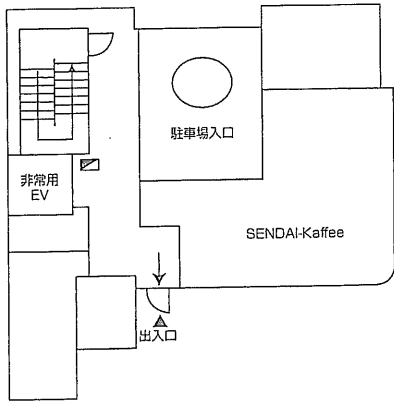
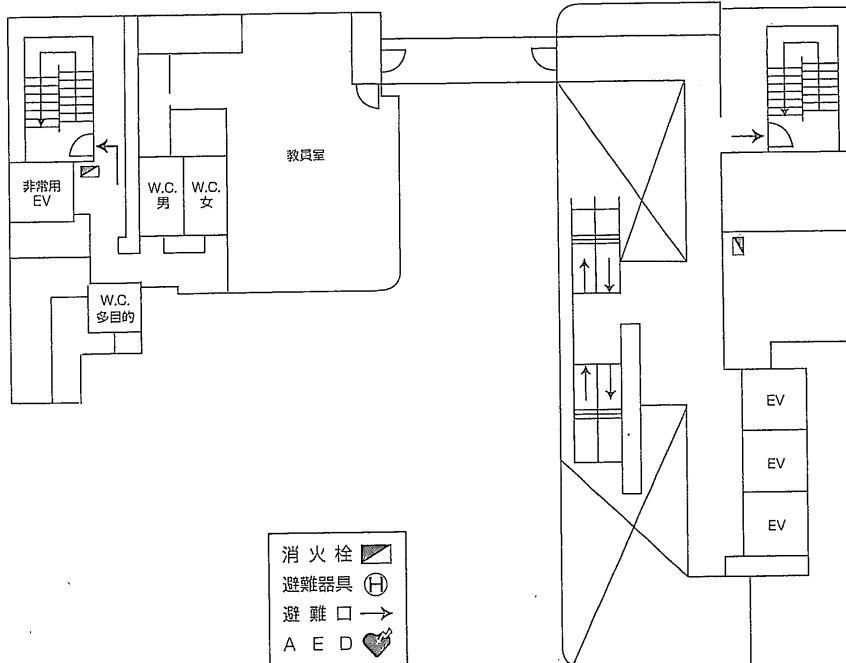


# 神田校舎 10号館 1階・2階

1階

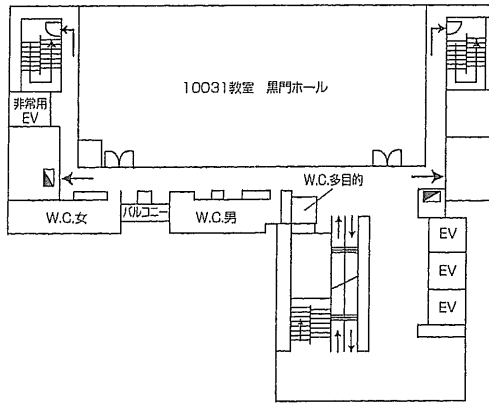


2階

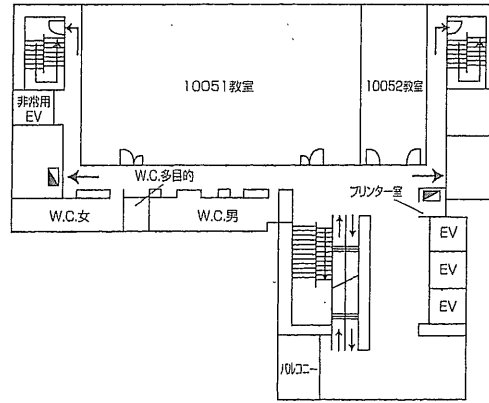


# 神田校舎 10号館 3階~6階

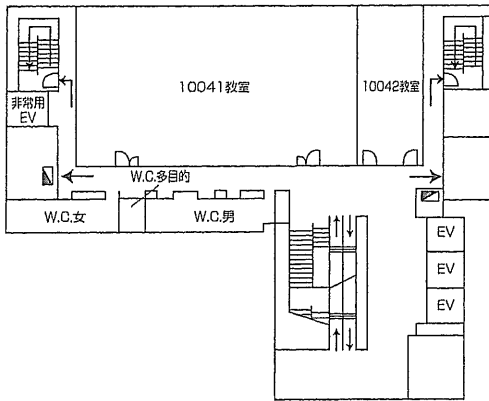
3階



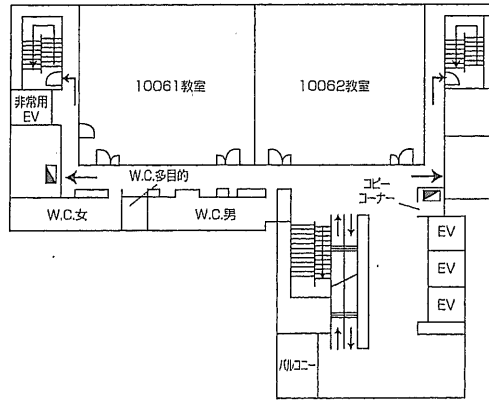
5階



4階



6階



教室	定員
10031	400
10041	302
10042	75
10051	302
10052	75
10061	180
10062	180

消火栓

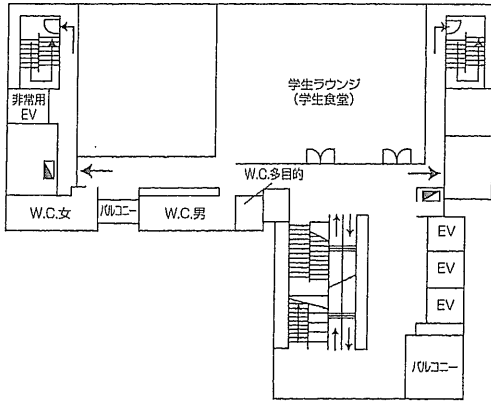
避難器具

避難

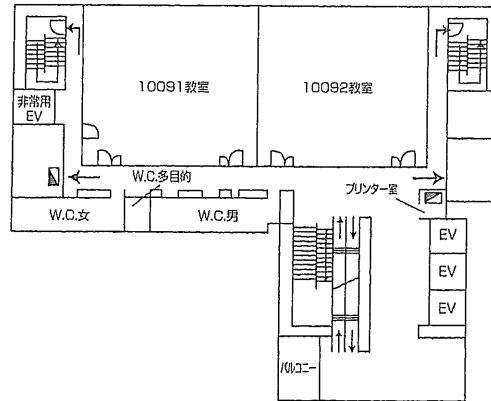
AED

# 神田校舎 10号館 7階～10階

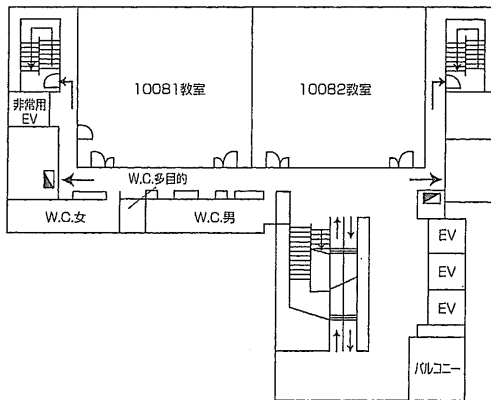
7階



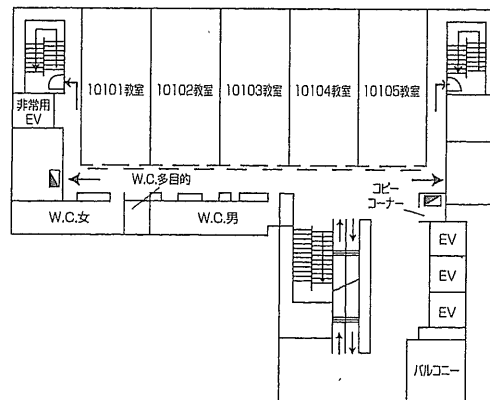
9階



8階



10階

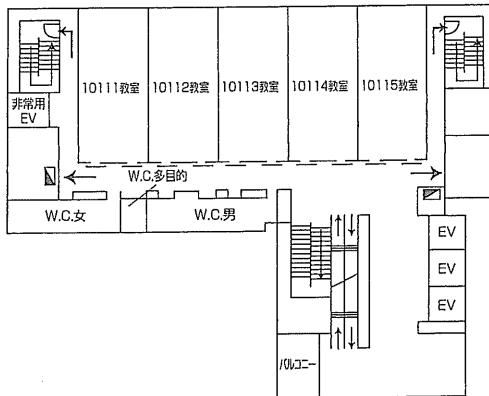


教室	定員
10081	196
10082	196
10091	196
10092	196
10101	75
10102	75
10103	75
10104	75
10105	75

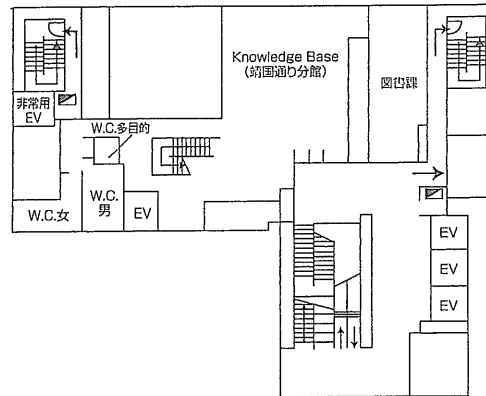
- 消火栓
- 避難器具
- 避難口
- AED

# 神田校舎 10号館 11階~14階

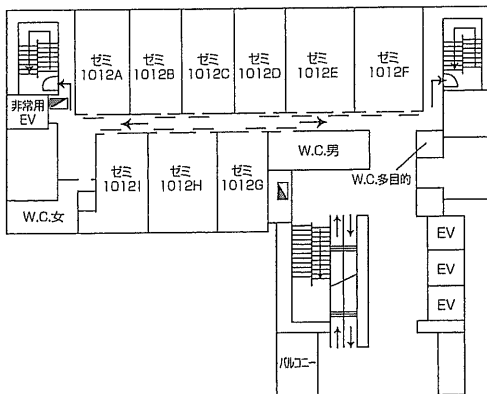
11階



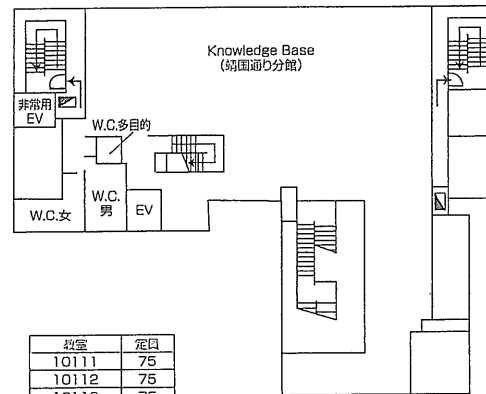
13階



12階



14階



教室	定員
10111	75
10112	75
10113	75
10114	75
10115	75
ゼミ1012A	28
ゼミ1012B	28
ゼミ1012C	28
ゼミ1012D	28
ゼミ1012E	36
ゼミ1012F	36
ゼミ1012G	28
ゼミ1012H	36
ゼミ1012I	28

消火栓 (Fire Hydrant)

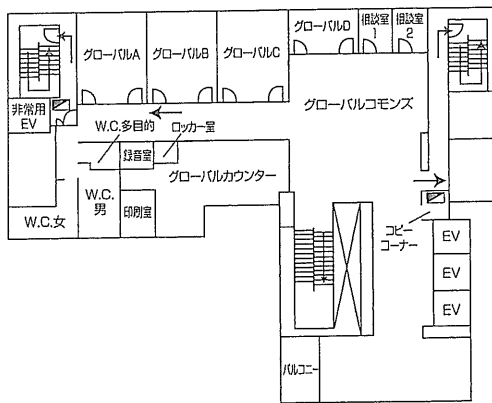
避難器具 (Evacuation Equipment)

避難口 (Evacuation Exit)

AED (Automated External Defibrillator)

# 神田校舎 10号館 15階・16階

15階



16階

