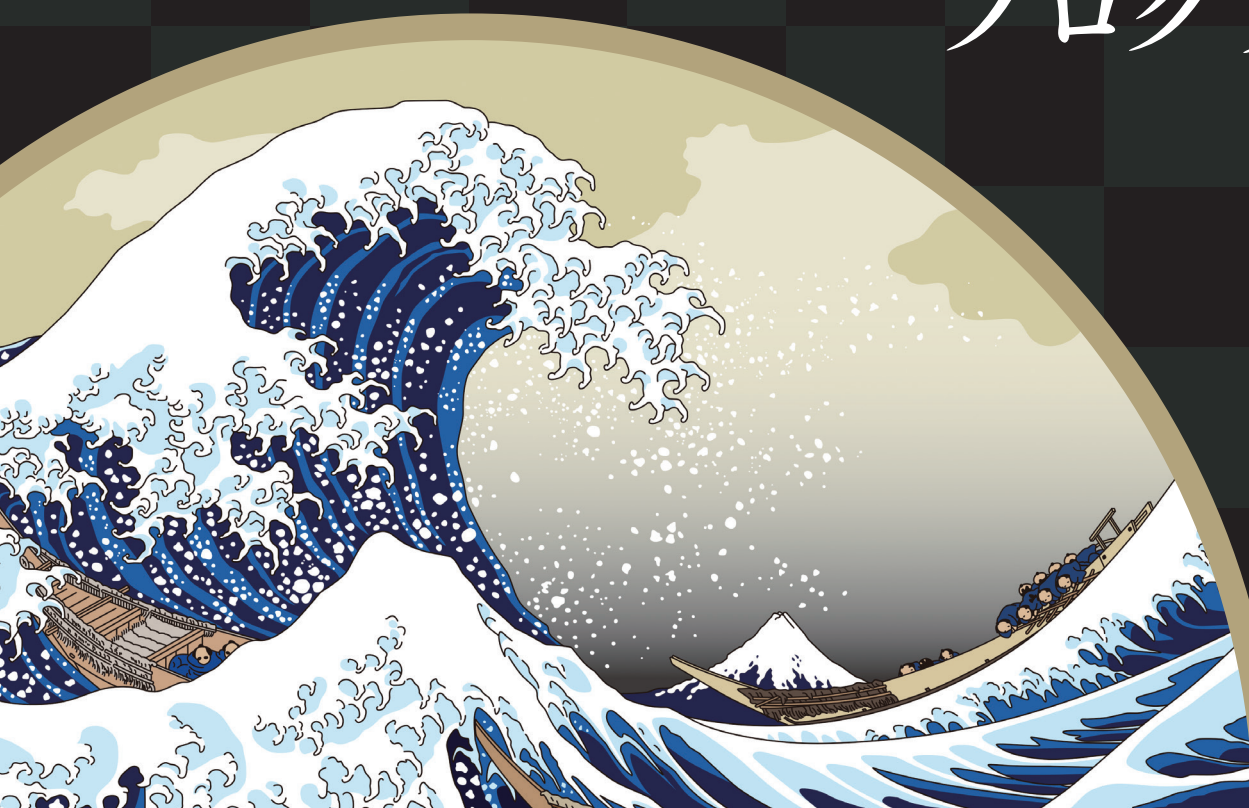


Japanese Language & Culture (JLC) Program

日本語・日本事情 プログラム



夏1

3 week

Summer Term 1

5月～6月

May-June

夏2

7 week

Summer Term 2

6月～8月

June-August

秋

12 week

Fall Term

9月～12月

September-December

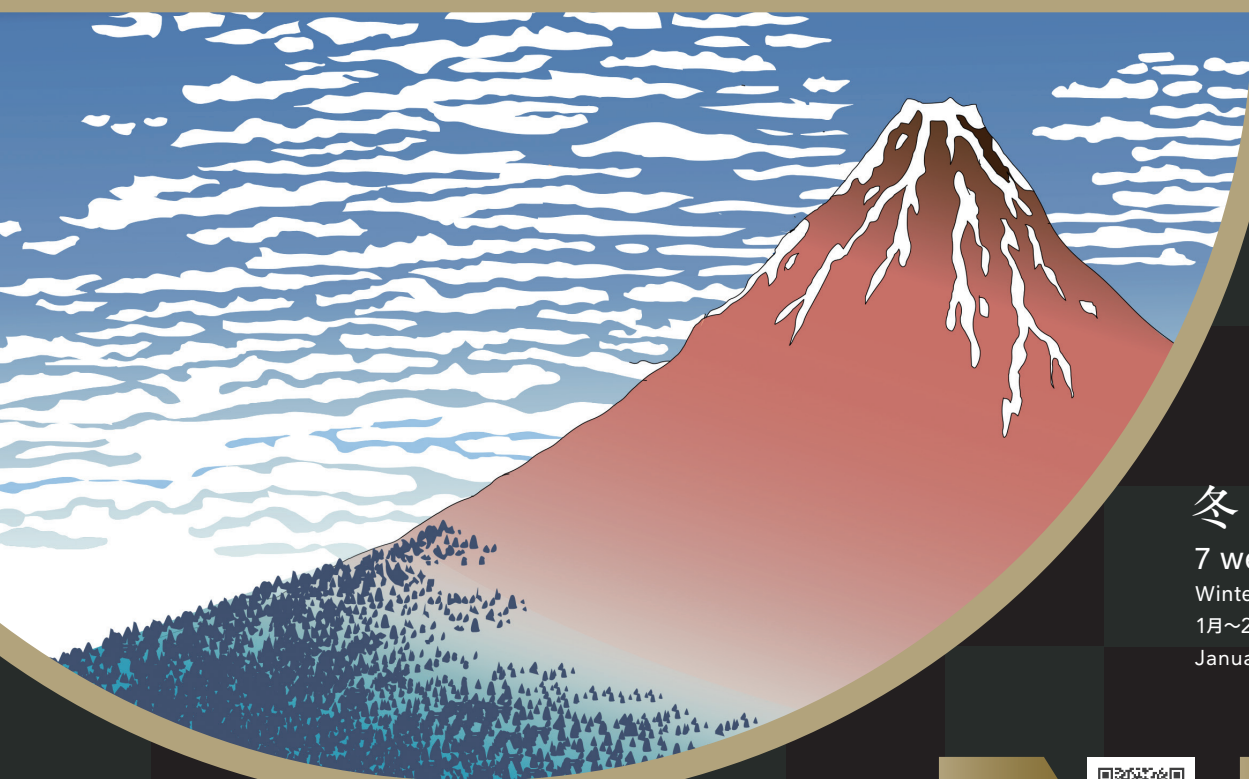
冬

7 week

Winter Term

1月～2月

January-February



ENGLISH



JAPANESE



日本語・日本事情プログラム

Japanese Language & Culture (JLC) Program

語学とともに、文化、芸術などの魅力も堪能できる短期留学

This is an immersive short-term study abroad program that includes Japanese language classes, fieldtrips, and cultural activities.

年間4期のプログラムを開講。日本語の授業は週あたり20時間のレッスン。

日本語の総合的な語学力の習得を目的としており、様々な文化的イベントやフィールドトリップなども取り入れています。

This program is offered four times a year and is designed to help students acquire comprehensive Japanese language skills.

It includes 20 hours of Japanese classes a week and incorporates various cultural events and excursions.

JLCプログラム 4つの強み

4 Highlights of the JLC Program

〈1〉

実践的な日本語学習

Practical Japanese Lessons



経験豊富な講師による少人数制クラス。専修大学生との会話練習などを取り入れた実践的な指導を行います。

Small classes taught by experienced instructors, offering practical training that includes conversation practice with Senshu University students.

〈2〉

多彩なコース編成

A Wide Variety of Course Offerings



3週間(夏Ⅰ)、7週間(夏Ⅱ・冬)、12週間(秋)の4コースを展開。時期や目的に合わせてコースが選べます。

We offer four courses: 3 weeks (Summer I), 7 weeks (Summer II / Winter), and 12 weeks (Fall). You can choose a course according to your schedule and goals.

〈3〉

日本文化を存分に体験

Full Immersion in Japanese Culture



午後や週末のアクティビティでは、日本文化体験・芸能鑑賞を通し、様々な日本文化の魅力に触れることができます。

Afternoon and weekend activities provide opportunities to experience Japanese culture through workshops and traditional performances.

〈4〉

きめ細やかなサポート体制

International Student Support



目が行き届いた担任制度により、すべての学生の学習をサポート。また、日本で安心・快適に過ごせるように、国際交流会館専属のスタッフとレジデントアシスタントがサポートします。

The instructors, staff, and Senshu University students who assist with the program are all dedicated to supporting international students and ensuring a safe and comfortable stay in Japan.

専修大学は1880年に創立され、140年以上の歴史を持つ人文・社会・情報科学系の8学部を有する高等教育機関です(2025年の学生数は17,967人、337人の留学生を含む)。日本語や日本の文化を効果的に学びたいという留学生を広く受け入れるため、1年に4回の日本語・日本事情プログラムを1996年から開講し、世界各国からの参加者を受け入れています。

Founded in 1880, Senshu University is an institution of higher education with a history that spans more than 140 years. It has eight faculties in fields such as humanities, social sciences, and information science (the 2025 student population is 17,967 which includes 337 international students). We offer the Japanese Language and Culture (JLC) Program to international students wanting to effectively learn the Japanese language and deepen their understanding of Japanese culture. Since 1996, this program has been offered four times a year with participants from all over the world.

SENSHU UNIVERSITY PROFILE

📅 モデルスケジュール / Example Schedule

Example: J1C Class (Japanese classes end by the 4th period)

Day	1 st Period 9:00–9:50	2 nd Period 10:00–10:50	3 rd Period 11:00–11:50	4 th Period 12:00–12:50	Afternoon Activities
MON	Kanji / Reading	Grammar*1	Grammar*1	Grammar*1	Tea Ceremony
TUE	Kanji / Short Speech	Grammar*1	Listening / Vocabulary	Visitor Session*2	Japanese Calligraphy
WED	Kanji / Conversation	Grammar*1	Grammar*1	Grammar*1	Free
THU	Kanji / Short Speech	Grammar*1	Listening / Vocabulary	Visitor Session*2	Kabuki Play
FRI	Kanji / Conversation	Grammar*1	Grammar*1	Preparation for Interview	Japan Open-Air Folk Museum
SAT	Free				
SUN	Free				

*1 Grammar: learning new grammar patterns, sentence patterns, and dialog exercises

*2 Visitor Session: conversation practice with Senshu University students

🚗 アクティビティ / Field Trips & Cultural Activities

文化施設へのフィールドトリップや様々な文化体験などのアクティビティがプログラムに含まれています。

This program includes activities such as field trips to cultural facilities and various cultural experiences.

*The activities vary depending on the course.

アクティビティ例 / Example Activities



歓迎会
Welcome Party



歌舞伎鑑賞
Kabuki
Performance



鎌倉ツアー
Day Trip
to Kamakura



書道教室
Japanese
Calligraphy



浅草ツアー /
茶道体験
Day Trip to Asakusa /
Tea Ceremony



送別会
Farewell Party

🏠 ホームビジット (オプション) / Home Visit (Optional)

プログラム期間中の週末を利用して、日本人家庭で週末のホームステイを体験することができます(夏1を除く)。

※参加を希望する場合は、別途参加費(返金不可)がかかります。オリエンテーションは参加必須です。申込書は希望者のみに送ります。

Participants can also participate in a three-day homestay program (called "Home Visit") for one weekend (excluding Summer 1 Term). By staying with a Japanese family, you can learn more about Japanese culture and customs.

*The Home Visit requires an additional non-refundable fee and a separate application form. There is a mandatory orientation in order to participate.

❓ キャンパスアシスタント / Campus Assistant (CA)

専修大学にはキャンパスアシスタント(CA)と呼ばれる、留学生をサポートするシステムが整っています。

プログラム期間中は、様々な面から皆さんの学習のサポートを行います。

Senshu University has support system for international students called "Campus Assistant" (CA) in which Senshu University students assist with your language study and help solve any daily life concerns you may have.

Examples of CA Activities

- ☐ キャンパス・ダウンタウンツアー / Tour of the campus and surrounding area
- ☐ クラス内での会話練習 / Japanese conversation practice in pairs during class (interview)
- ☐ プレゼンテーションへの参加 / Listening to presentations by international students and asking question
- ☐ 発音練習 / Practicing pronunciation



JLC
Program
JAPANESE
LANGUAGE & CULTURE
PROGRAM



参加資格 Qualifications

12年以上の教育課程を修了した方が対象です。

応募者は、プログラム参加前にひらがなを学んでおく必要があります。

Applicants must have completed at least 12 years of education or be a university student (or have equivalent qualifications). Applicants are also requested to learn hiragana (one of the Japanese alphabets) prior to participating in the program.

Voices of Past Participants

過去参加者の



ENGLISH



JAPANESE



コースデータ Facts & Figures

- 1クラスの学生数：最大12名
- レベル数：初級から上級まで7レベル
- 期間：3、7、12週間
- 滞在施設：専修大学国際交流会館（キャンパス内の寮）
- 授業実施場所：生田キャンパス
- Number of students per class: 12 (maximum)
- Number of levels: 7 levels (from beginner to advanced)
- Program Period: 3 weeks, 7 weeks, or 12 weeks
- Accommodation: Senshu International House (i-House) [on-campus dormitory]
- Class Location: Ikuta Campus

EXAMPLE CLASS LEVELS (7 Week Summer Term 2 / Winter Term)

Level	Objectives	Class Content
J1A (Introductory Level)	<ul style="list-style-type: none"> • To be able to participate in simple daily conversation , and talk about oneself and one's country of origin • To deepen one's understanding of Japanese culture 	<ul style="list-style-type: none"> • Introductory level grammar points • Simple daily conversation and listening • Reading and writing simple sentences and paragraphs • Hiragana and Katakana (Japanese alphabets), and basic pronunciation • Short speech and presentation • Basic vocabulary and 50 Kanji characters
J1B/J1C (Beginner Level)	<ul style="list-style-type: none"> • To be able to engage in basic daily conversation and talk about familiar topics • To deepen one's understanding of Japanese culture 	<ul style="list-style-type: none"> • Beginner level grammar points • Basic daily conversation and listening • Reading and writing simple paragraphs • Basic vocabulary and 60 Kanji characters • Short speech, interview task, and presentation
J2 (Lower Intermediate Level)	<ul style="list-style-type: none"> • To be able to discuss familiar issues and express one's opinion • To deepen one's understanding of Japanese culture 	<ul style="list-style-type: none"> • Reinforcement of basic grammar points , and lower intermediate level grammar points • Daily conversation and listening • Reading and writing slightly longer paragraphs • Pronunciation, vocabulary , and 60 Kanji characters • Simple research presentation
J3 (Intermediate Level)	<ul style="list-style-type: none"> • To be able to summarize and express one's ideas and opinions • To deepen one's understanding of Japanese culture 	<ul style="list-style-type: none"> • Intermediate level grammar points and expressions • Expressing one's ideas and opinions • Listening to slightly longer narration and conversation • Reading and writing slightly more sophisticated paragraphs • Pronunciation, vocabulary , and 60 Kanji characters • Research presentation
J4 (Advanced Level)	<ul style="list-style-type: none"> • To be able to summarize simple news and articles, and express one's opinions logically • To deepen one's understanding of Japanese culture 	<ul style="list-style-type: none"> • Advanced level grammar points and expressions • Pronunciation and expressions for smooth communication • Listening to simple news, reading simple articles, and sharing the information from the materials • Vocabulary and 60 Kanji characters • Academic writing and research presentation
J5 (Upper Advanced Level)	<ul style="list-style-type: none"> • To be able to summarize news and articles without difficulty, and express one's opinions logically • To deepen one's understanding of Japanese culture 	<ul style="list-style-type: none"> • Upper advanced level grammar points and expressions • Expanding one's knowledge of pronunciation and expressions for smooth communication • Listening to news, reading articles, and sharing information from the materials • Discussion and debate • Vocabulary and 60 Kanji characters • Academic writing and research presentation

STEP 1

アプリケーションの作成 / Complete the online application



- ・ 文法チェック(オンライン)の入力 / Complete the Japanese Comprehension Checklist
- ・ 応募書類のアップロード / Upload the following application materials

① パスポートコピー

Copy of your passport

② 成績証明書

Official Transcripts

- These transcripts should show your academic records from the college, university, or school you have most recently attended.
- Submitted transcripts must be originals or certified true copies of the original document.
- If transcripts are not written in Japanese or English, please attach a translation in either language certified by the embassy or relevant public officials.

③ 保険調査票

Health Check Form

④ 証明写真

A single ID photo (digital color photo)

- Headshot (passport style; facing front, showing your full face and shoulders, no hat or background)
 - Informal or casual photos are not accepted.
 - The size should be 4 x 3 cm (1-5/8 x 1-3/16 in.)
 - The photo can be taken with a smart phone.
 - The photo must have been taken within the last 3 months
- *Note: This ID photo will be used to make your Senshu University student ID card.

STEP 2

受講決定通知の受取り / Receive Application Results

STEP 3

研修費用の支払い / Pay Program Fee

よくあるご質問

FAQ

Q 大学生でなくても参加できますか？
A はい、12年以上の教育課程を修了していれば参加できます。

Q Can I participate even if I'm not currently a university student?
A Yes, but you must have completed at least 12 years of education.

Q 留学にあたり、保険に加入しなければなりませんか？
A はい、本国を出発する前に専修大学が指定する補償条件を満たす海外旅行保険に加入することを義務付けています。

Q Do I have to purchase insurance for this study abroad program?
A Yes, you are required to purchase travel insurance that meets the coverage requirements specified by Senshu University prior to departing from your home country.

Q 在籍大学の単位として認められますか？
A 大学によって取扱いが異なります。在籍大学に問い合わせてください。

Q Can I earn credits transferable to my home university?
A We cannot guarantee that any credits earned through this program are transferable, so please inquire with your home university.

Q 国際交流会館に滞在しないといけませんか？
A ほとんどの学生がプログラム期間中は滞在して、国際交流を楽しんでいます。希望しない場合は申し出てください。

Q Do I have to stay at the i-House (dormitory)?
A Most students stay in the i-House during program and enjoy interacting cross-culturally with other students. However, if you prefer to stay outside of the i-House, please let us know.

Q プログラム期間中にホテルや友人宅に外泊することはできますか？
A はい、事前許可を得たうえで、授業に影響がない範囲であれば、外泊も可能です。

Q Can I stay overnight at a hotel or a friend's house during the program period?
A Overnight stays outside of the dormitory are possible as long as you obtain prior approval and it doesn't affect your attendance or coursework.

i-HOUSE

専修大学国際交流会館



2人部屋が基本の居室は52室。JLCプログラム参加者のほかに、国際交流協定校からの交換留学生やレジデント・パートナー(RP)、レジデント・アシスタント(RA)ら計102人が暮らすことができる施設です。共有スペースとして、キッチン、ダイニング、ランドリールーム、トイレ、シャワールーム、自習室やレクリームなども利用することができます。キッチンには調理器具や調理家電を完備しており、時には様々な国の料理を囲んでパーティなどが行われます。また、ダイニングやレクリームで専修大学学生と留学生が活発に交流することができます。

The i-House has 52 student rooms (with two students to a room) that can accommodate a total of 102 residents, including not only JLC Program participants, but also international exchange students and Senshu University students living in the dormitory as Resident Partners (RPs) or Resident Assistants (RAs). The dormitory also has shared communal areas such as kitchens, dining areas, laundry rooms, restrooms, shower rooms, study rooms, and a recreation room, all of which are kept clean and well maintained. The kitchens are fully equipped with cooking utensils and appliances, and parties are often held inside the dormitory with food from various countries around the world. All students living in the dormitory have many opportunities to enjoy meaningful cross-cultural interactions on a daily basis.

i-Houseにはスタッフが常駐しており、セキュリティも万全です。また、レジデント・アシスタント(RA)も滞在しており、急病の時の対応や日本での生活のサポートをしています。

The i-House has full-time staff and a security office. Senshu University students residing as Resident Assistants (RAs) are also available to provide support during participants' daily life in Japan and in the event of sudden illness.

i-Houseでは、様々な交流を行っています。歓迎会をはじめ、季節のイベント、東京都近郊へのフィールドトリップなど、たくさんのイベントを用意しています。また、専修大学学生のキャンパスアシスタント(CA)とのイベントもあり、様々な日本人学生との交流の機会があります。

The i-House facilitates daily cross-cultural interactions among students. Additionally, the JLC Program includes welcome parties, seasonal events, excursions to sightseeing spots around Tokyo, and more. These events and excursions are also attended by Senshu University students residing outside of the dormitory as volunteer Campus Assistants (CAs).

レジデント・パートナー / Resident Partner (RP)



レジデント・アシスタント(RA)に加えて、i-Houseには、学内留学プログラムに参加している専修大学生であるレジデント・パートナー(RP)も居住しています。寮内には多くの日本人学生も生活しているため、日本語の会話を高め、日本文化への理解を深めることができます。留学期間を通して様々な交流の機会を提供しています。

Along with Resident Assistants (RAs), the i-House also houses Resident Partners (RPs) who are Senshu University students participating in a domestic study abroad program. Since there are many Japanese students also living in the dormitory, you can improve your Japanese conversation skills and deepen your understanding of Japanese culture. We provide a wide range of opportunities for interaction and cultural exchange during the program.

IKUTA CAMPUS

生田キャンパス

新宿から小田急線で25分の生田キャンパスは、街を一望できる大きな丘の上にあります。理想の大学教育を追求する姿勢を反映し、最新の学術・体育施設を備えています。

Located in one of the more natural, lush areas of Greater Tokyo, yet 25 minutes away from the world's busiest train station (Shinjuku), Ikuta Campus sits on top of a large hill with a commanding view of the city. The campus provides the latest academic and physical education facilities, reflecting our commitment to the pursuit of the ideal university education.



CONTACT

International Center, SENSU UNIVERSITY, JAPAN

Senshu University 2-1-1 Higashimita, Tama-ku, Kawasaki-shi, Kanagawa 214-8580, Japan
TEL : +81-44-911-1250 E-mail : japanese@acc.senshu-u.ac.jp

