

BCL Program

- Survey of Japanese Business
- Survey of Culture & History
- Japanese Language Courses



専修大学

SENSHU UNIVERSITY

<https://www.senshu-u.ac.jp/global/>

FALL 2023

(tentative)



BCL Program Information

SENSHU UNIVERSITY



ABOUT SENSHU UNIVERSITY



Senshu's mascot, "Sendy"



Senshu University was established in 1880 and has two main campuses: Ikuta Campus (pictured top left) and Kanda Campus (pictured top right). Its founders (Nagatane Soma, Inajiro Tajiri, Tanetaro Megata, and Shigetada Komai) studied abroad in the USA at the dawn of the Meiji era, and after returning to Japan, created *Senshu Gakko* (the forerunner of present-day Senshu University). It was one of the first academic institutions in Japan to teach law and economics in Japanese. Through our study abroad programs, we aim to build upon the founders' achievements and provide opportunities for students from all around the world to learn about Japanese business, culture, and language.

ABOUT THE BCL PROGRAM

The BCL Program has been specifically designed for students from Senshu's partner universities and offers them a general understanding of not only the Japanese language, but also Japanese business practices, cultural paradigms, and a chance to experience daily life in Japan. The program starts at the end of September and ends in the middle of December (12 weeks in total). It consists of three courses:

- Survey of Japanese Business*
- Survey of Japanese Culture & History*
- Japanese Language

**Taught in English.*

The "Japanese Language" course is offered to all international students, including individual participants, who wish to learn the language intensively. It features class levels ranging from beginner to advanced.

*Please note that, the contents listed are from the previous year, so class hours, company visits and activities might have changes.

*** The classes may also include participation by Senshu University students.**



Survey of Japanese Business



Throughout this course, students gain invaluable insight into the business concepts and management philosophies that made Japan one of the world's largest economies. The first objective of this course is to provide students with a theoretical framework of Japanese-style business practices through informative lectures. The second is to give students a firsthand look into the inner workings of Japanese corporations through company visits. The third is to improve students' analytical skills by having them conduct research and present their findings. Accordingly, the three core course components have been divided into the following:

Lectures

Teachers and professionals from various backgrounds share their expertise with students through lectures, case studies, and class discussions. Past topics have included "Gender and Organizational Customs in Japanese Companies", "Global Business and Society" and the "The Japan's Success, Failure, and Lessons Viewed from Financial Aspects".

Company Visits

Students visit companies, factories, and other organizations located within the metropolitan area of Tokyo to observe how the concepts discussed in the core course lectures are actually applied. Corporate officers also give presentations and tours. In previous years, company visits have included the ANA (The All Nippon Airways Co., Ltd.), Rakuten (one of the largest e-commerce company) and Chrono Gate (a global logistics company).



Field Research Project (Topic: “Museum Safari”)

This project's purpose of this class is to learn field research method (Qualitative Research Method) having enjoyable experiences in museums in Tokyo. Museums has so many amazing, inspiring and impressive displays that we can find and learn a lot of things. Throughout the experience, you make “Fieldnotes (make a notes about what you saw, observed, found, learned...)”.

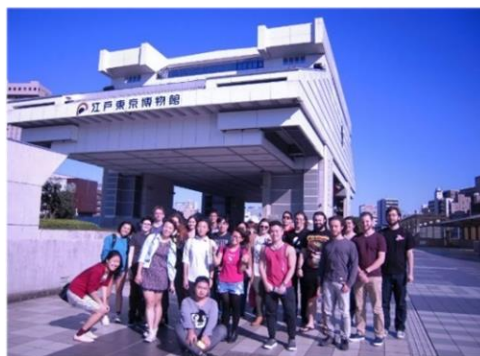
Give a presentation at the end of the program on their findings. These presentations include visual aids (such as PowerPoint) as well as a Q&A with the audience. Upon completing their presentation, students submit a print version of their visual aids and draft for a grade.

Survey of Japanese Culture & History

The purpose of this course is to deepen students' understanding of Japanese culture and history through various lectures, field trips/excursions, and hands-on activities that are culturally unique to Japan.

Lectures

Throughout this course, students are exposed to a wide range of viewpoints regarding Japanese culture and history, especially through the lectures conducted by teachers and professionals (all with diverse backgrounds and areas of expertise). These Lecturers aim to provide students with a well-rounded understanding of Japanese society by discussing topics that cover both ancient and modern Japan, such as the Japanese history, pop-culture, Intercultural Communication and the as well as other aspects of modern Japanese culture and subcultures (such as *anime* and *manga*). Past topics have included “Understanding Misunderstanding: Non-verbal Communication and Japanese”, “Japanese Pop Culture”, and “Japanese History”.



Field Trips & Excursions

In this course, students gain access to places of cultural interest through field trips and excursions. In the previous year, we have visited various cultural experience facilities, such as a one-day excursion to Asakusa, a tour of Kamakura, and a visit to the Japanese Folk House Garden.



Activities

The goal of this course is not simply to teach students about Japanese culture and history, but let them experience it firsthand. Students will have the rare opportunity to immerse themselves in traditional Japanese activities such as *Sa-dō* (Japanese Tea Ceremony held in a *tatami* room), *Sho-dō* (Japanese calligraphy), and Noh theater (a traditional style of Japanese drama). Through “experiential learning”, students will have the chance to gain a deeper understanding of Japanese culture by practicing unique rituals which have been performed for over a thousand years.

Japanese Language Course

The purpose of this course is to equip students not only with fundamental Japanese grammar and vocabulary, but also a comprehensive understanding of how to communicate effectively in Japanese. Students will be provided with textbooks and other materials which they may keep after the program.

Classes are arranged according to students' levels (usually four to six different levels) with a maximum of 12 students per class. Students are placed in an appropriate level class according to the results of their preliminary comprehension checklist. Upon arriving in Japan, students will also be given a final oral and written test to determine the most appropriate class level for them. Classes are primarily held between 9:00 am – 12:50 pm (four periods comprised of four successive 50 minute sessions) Monday through Friday. Students will have a homeroom teacher, but also be regularly taught by different instructors throughout the week. At the end of the course, **students will give short presentations in Japanese** on any topic they choose.





Life in Japan

SENSHU UNIVERSITY



Location: Participants in the BCL Program reside and take classes at Senshu University's Ikuta Campus (located near central Tokyo). The nearest train station to the campus is Mukogaoka-yuen Station, which is only 25 minutes away via express train from Shinjuku (a major metropolitan area pictured top right). Therefore, students are able to easily access cultural and historical places, as well as business districts.

Dormitory: Students in this program stay at an international student dormitory called the "Senshu International House" (known as *kokusai kōryū-kaikan*, or "i-House", and pictured right/top left), which is located a one-minute walk away from campus. Full-time Senshu University students also reside in the dormitory as resident assistants/resident partners throughout the entire BCL Program to facilitate many opportunities for cross-cultural interactions (as well as provide support in solving any issues or difficulties international students may have).

Please refer to the website for more information;

<https://www.senshu-u.ac.jp/global/english/house.html>



Home Visit: Students have the option of participating in a "Home Visit" (i.e. weekend homestay lasting for 3 days and 2 nights) during the BCL Program. This is a wonderful opportunity for students to intimately experience the dynamics of Japanese family life and apply their Japanese language ability in a meaningful way.

Extracurricular Activities: All BCL Program participants are invited to participate in any of the various cross-cultural activities organized by full-time Senshu University students. These activities are a great way to make Japanese friends. Some of the more popular activities include the university festival held in early November (called *Ōtorisai*) and a day-trip to the large statue of Buddha in Kamakura (pictured right).



Pre-Departure Information

Healthcare: Before coming to Japan, serious medical and dental treatment should be fully taken care of. After arriving, all hospital charges for any illness diagnosis and/or prescribed medicine must be paid for by the participant, so students are required to have health insurance that covers them while in Japan. Please note that students are only able to use the free on-campus Student Health Center for emergencies and basic first aid.

Finances: Students should plan their budgets to meet all their anticipated living expenses, including meals. It is recommended that students bring around 120,000 – 150,000 JPY to cover miscellaneous expenses while participating in the program (or at least 80,000 JPY for immediate expenses).

Entering Japan: Please note that "Student Visas" will not be issued to participants in this program.

Japan has mutual visa exemption agreements with certain countries, so students who are passport holders of applicable countries can stay in Japan without a visa for a certain length of time (e.g. 90 days for the USA and Canada). Students from countries without mutual visa exemption agreements will be expected to obtain a "Temporary Visitor" visa at their nearest Japanese Embassy or Consulate. The BCL Program is purposely designed to begin and conclude within a 90 day period, so Senshu University cannot assume responsibility for visa extensions.



Necessary Documents

1. Online Application (form indicated in the “Japanese Language” course)
2. Online Comprehension Checklist (for the “Japanese Language” course)
3. BCL Program Confirmation Sheet
4. Home Visit Registration Form
 - *The Home Visit Registration Form is not necessary for applicants who do not wish to experience the three-day home-visit.
5. Official transcripts
6. Health Check Form
7. Pictures of the applicant (4cm×3cm)
 - * Headshot (passport style; facing front, showing your full face and shoulders, no hat or background)
 - * Informal or casual photos are not acceptable
 - * Taken within the last 3 months
8. Copy of passport

Note: The above forms (#1 to 4 and #6) are downloadable via following QR code:



Voices of Past Participants SENSHU UNIVERSITY



■Logan Thompson (2022) UNIVERSITY of OREGON, U.S.A.



The BCL Program has been a rewarding experience!

The BCL Program has truly been a once-in-a-lifetime experience. I've had a number of fantastic teachers during my time in the program and I've learned a lot of useful Japanese. Moreover, I've become much more comfortable speaking the language, especially in public. While the program can be challenging at times, it's been a rewarding experience. I've also made friendships with people from all around the world that I feel will last a lifetime. I'd recommend this program to anyone looking for a challenge or who wants to experience a new country with others from all over the world.

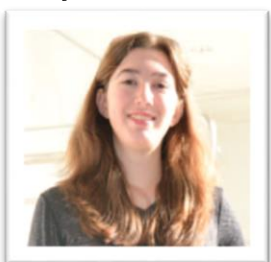
■Sophie Roopnarinesingh (2019) The University of Dublin, Trinity College, IRELAND



I now have friends from all over the world.

I had never studied Japanese before arriving at Senshu. Despite the language barrier, everyone was exceptionally friendly and welcoming. This made it easy to settle in quickly. The international house is very comfortable and homely. From the BCL programme, I now have friends from all over the world, who I have learnt to communicate and interact with while we learn more about Japan's beautiful and unique society."

■Samantha Seminara (2018) Susquehanna University, U.S.A.



Experiencing Japan First-Hand.

I have never been to Japan before, and barely knew the language, but the people here are so friendly and are always happy to help. The BCL program doesn't only teach you the language, it teaches you how to truly communicate and have meaningful interactions, as well as diving into the beautiful, one-of-a-kind culture that Japan has to offer.

