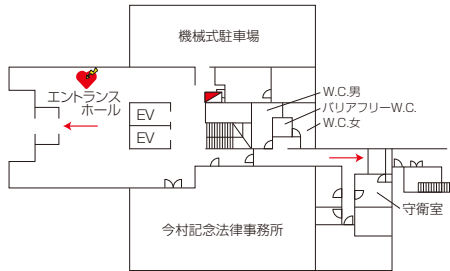
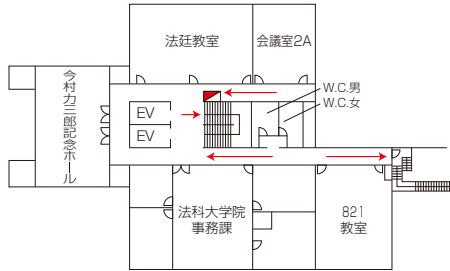


神田校舎 8号館 1階～4階

1階

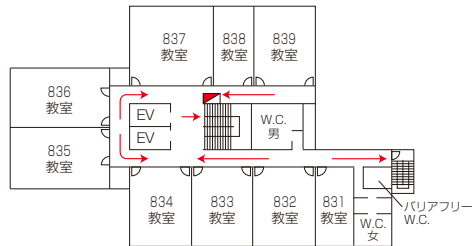


2階

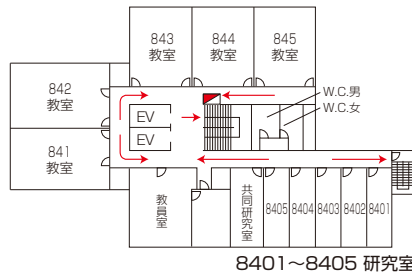


| 教室 | 定員 |
|-----|----|
| 821 | 80 |
| 831 | 18 |
| 832 | 28 |
| 833 | 28 |
| 834 | 28 |
| 835 | 52 |
| 836 | 52 |
| 837 | 54 |
| 838 | 18 |
| 839 | 28 |
| 841 | 52 |
| 842 | 52 |
| 843 | 28 |
| 844 | 32 |
| 845 | 32 |

3階



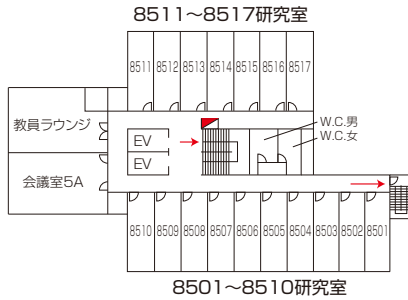
4階



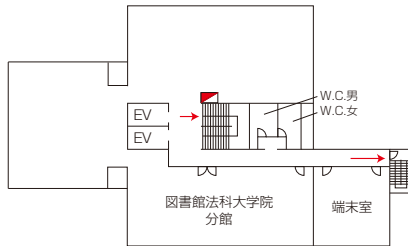
| | |
|-------|--|
| 消火栓 | |
| 避難器具 | |
| 避難 | |
| A E D | |

神田校舎 8号館 5階～8階

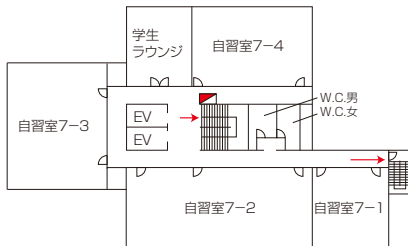
5階



6階



7階



8階

